

The Art of Early Korea and Japan









Neolithic period, Comb-pattern vessel, c.
4000–3000 BCE, earthenware with incised
decoration, Kyonghui University, Seoul



Bronze Age, Pot, 4th-3rd c. BCE,
earthenware



Bronze Age, Jar, 4th-3rd c. BCE
burnished earthenware
76.72.73

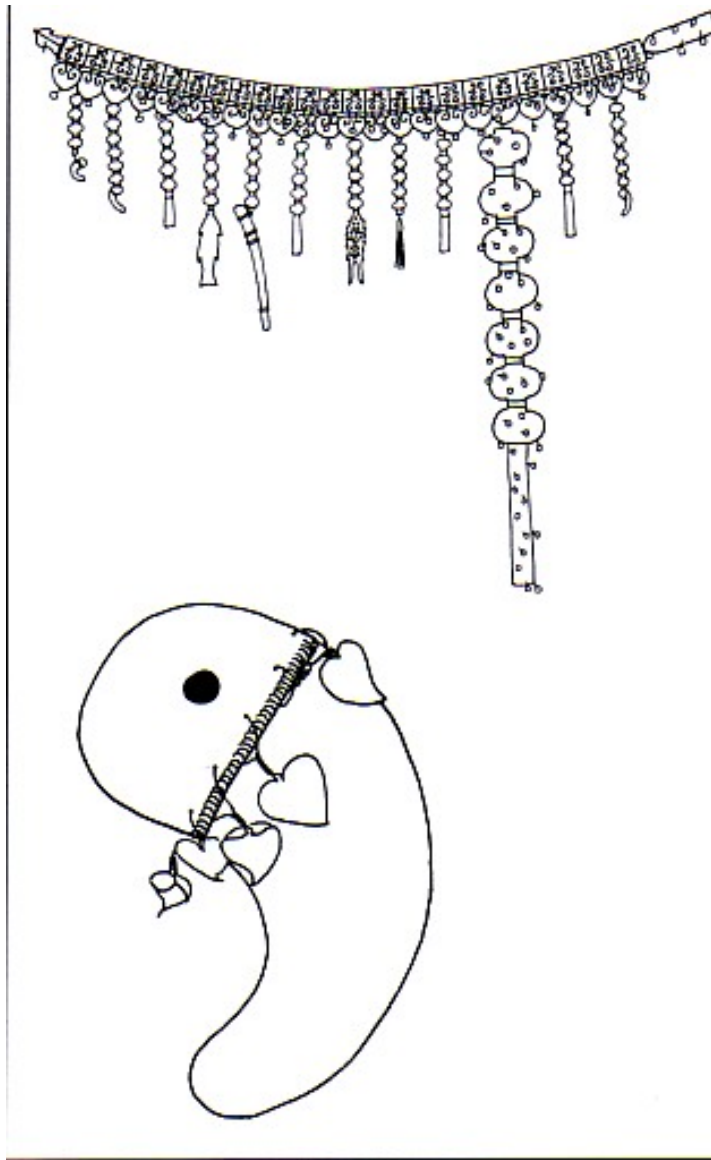


Illustration of an individual *kogok* and several ornaments (usually made of jade) suspended from a belt

Proto-Three Kingdoms period,
Round-bottomed jar with horn-shaped
handles, 1st-3rd century CE,
earthenware 98.108.1



Map 2: The Three Kingdoms at the Height of Koguryŏ Expansion (late fifth century)

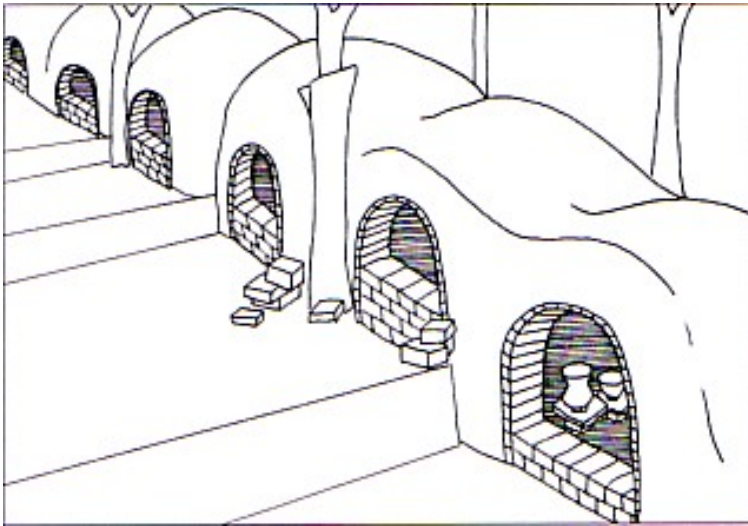




Three Kingdoms period (Old Silla),
Bowl on pierced foot, 5th century,
stoneware with natural ash deposits
89.118



Three Kingdoms period (Kaya), Round jar
with tall stand, 5th century,
stoneware with natural ash deposits
97.121.1a,b



Multi-chamber kiln



Three Kingdoms period (Kaya), Round jar, 3rd-5th century, stoneware 99.8



Three Kingdoms period (Kaya), Pedestal bowl with handles, 5th century, stoneware 97.122.1

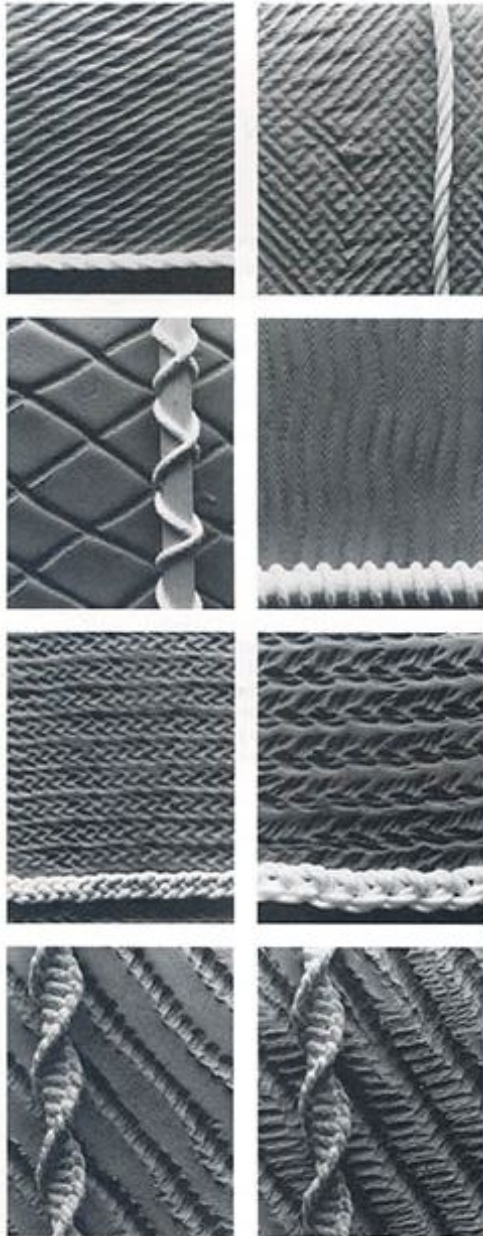


Three Kingdoms period (Kaya),
Large jar,
5th century,
stoneware with natural ash
deposits
97.120

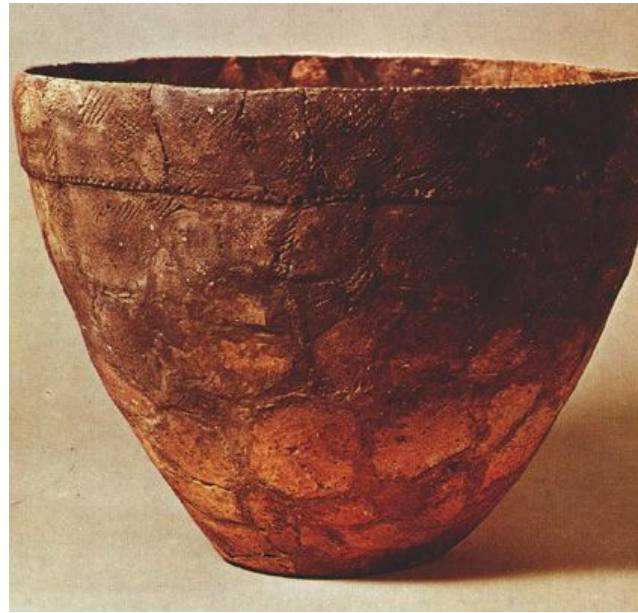


Three Kingdoms (Silla),
Crown, probably 6th century,
Gold with jadeite ornaments,





Cord-marking patterns



Incipient Jomon,
Vessel, Earthenware,
c.11,000-8000 BCE



Incipient Jomon,
Vessel, Earthenware,
c.11,000-8000 BCE



Middle Jomon period, Jar, 2500-1500 BCE,
earthenware 82.9.1



Middle Jomon period, Deep jar, 2500-
1500 BCE, earthenware 82.9.2

Middle Jomon period,
Figurine, c.2000 BCE, clay,
Tokyo National Museum



Jomon period, Stem cup,
1000-400 BCE, earthenware
2004.53





Yayoi Pottery





Middle Yayoi period,
Wide-mouthed jar, c.
300 BCE-C300CE,
earthenware 2011.10

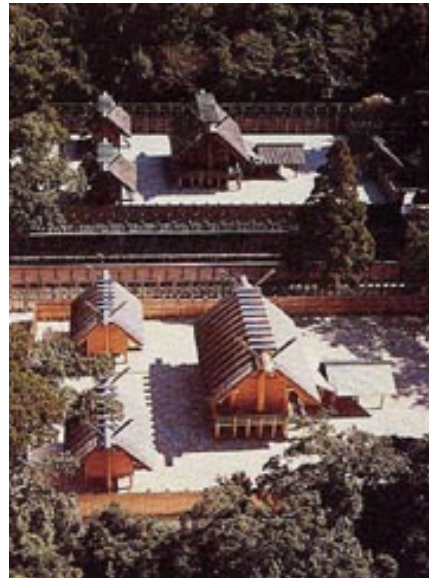


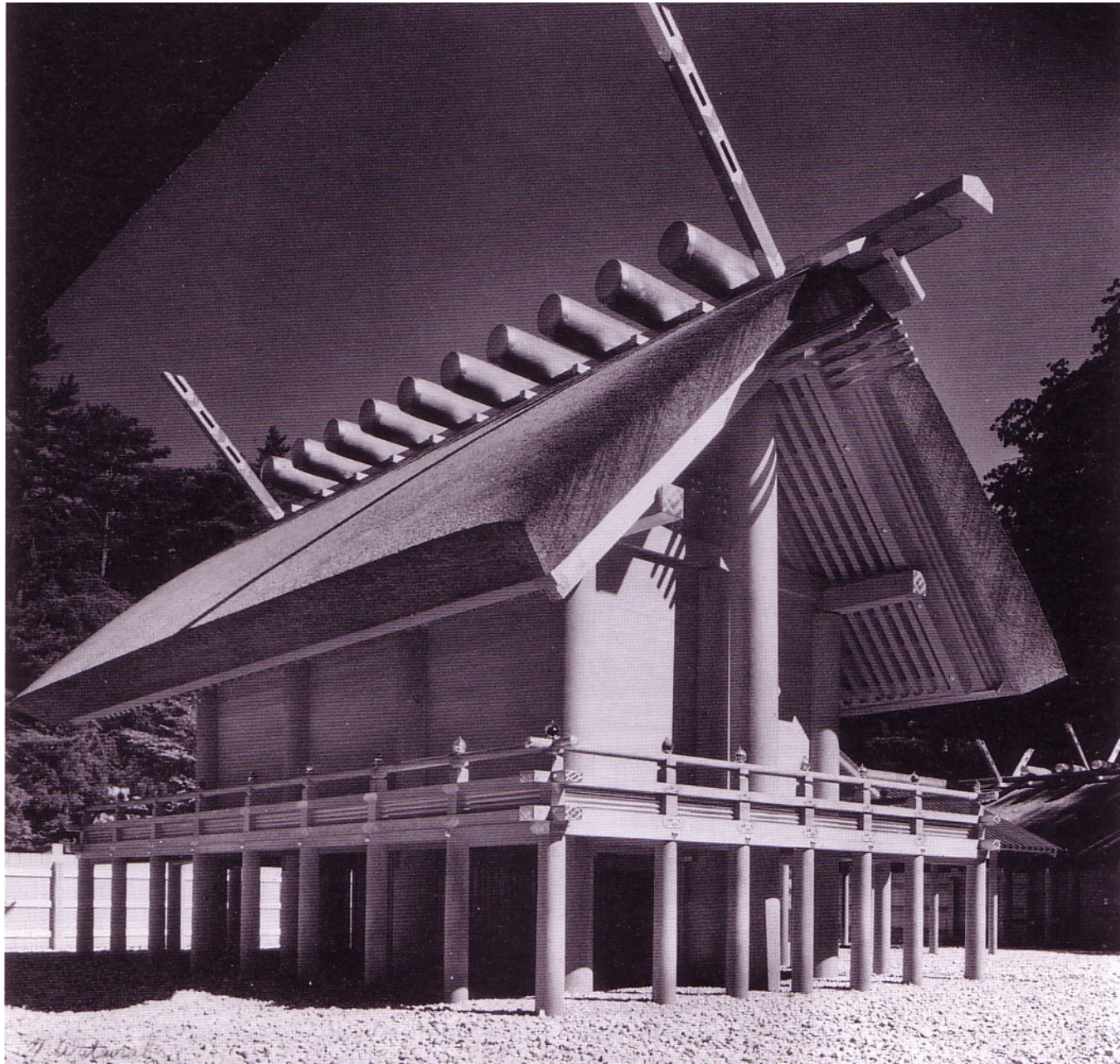


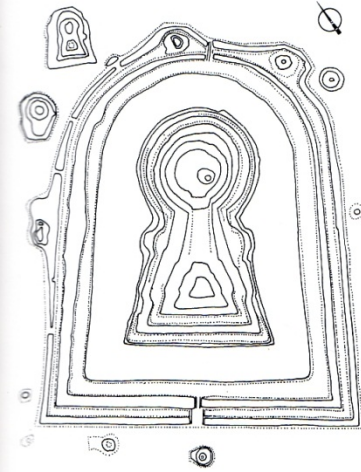
Yayoi Period, Dotaku bell,
1st c. BCE-1st c CE, bronze 64.1



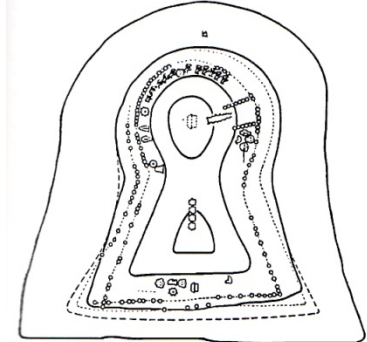






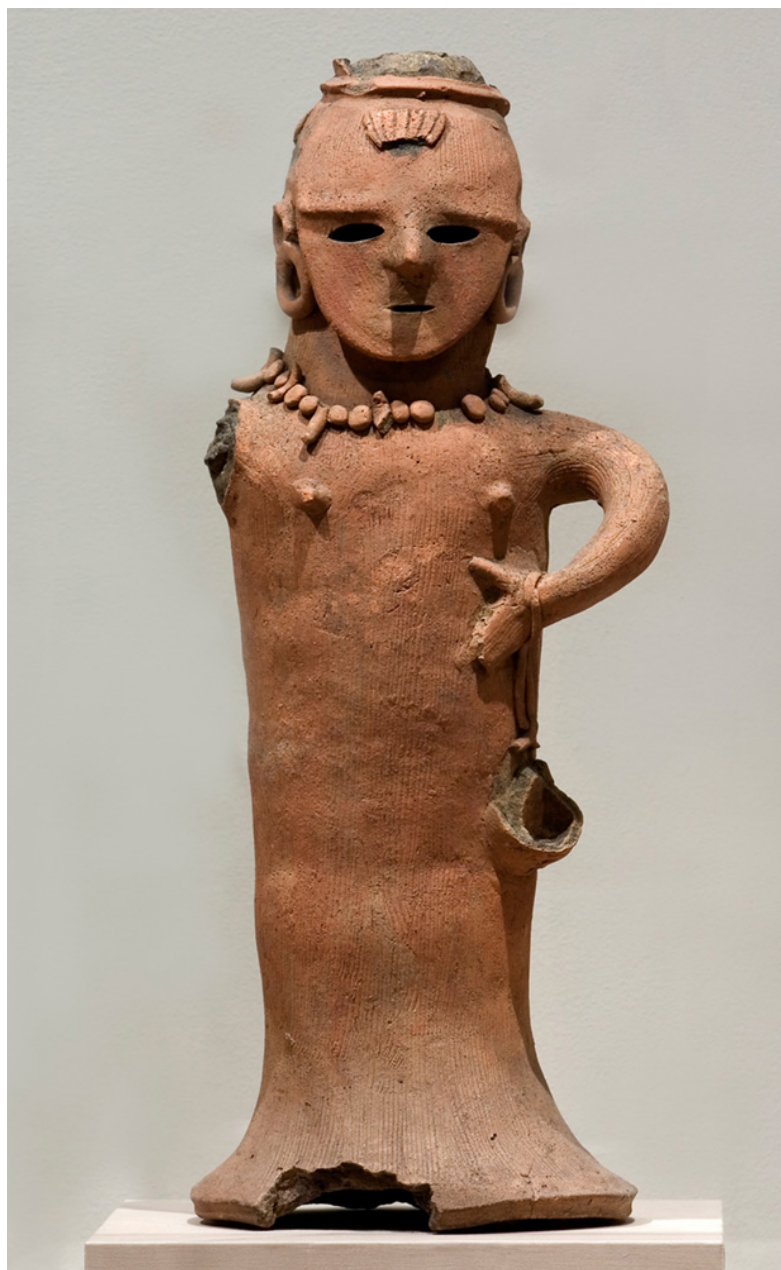


23. Contour plan, Tomb of Emperor Nintoku. (Pierre and Liliane Giroux, from *The Art of Ancient Japan*, Editions Citadelles, Paris)



24. Diagram of haniwa placement, Futatsuyama Tomb, Gunma prefecture

Tomb of Emperor Nintoku in Sakai, Osaka Prefecture, Late 4th to early 5th century CE



Kofun period, Female shaman,
6th century, earthenware 97.38



Noge-Ōtsuka Kofun tumulus in Setagaya-ku, Tokyo, Japan, early 5th century



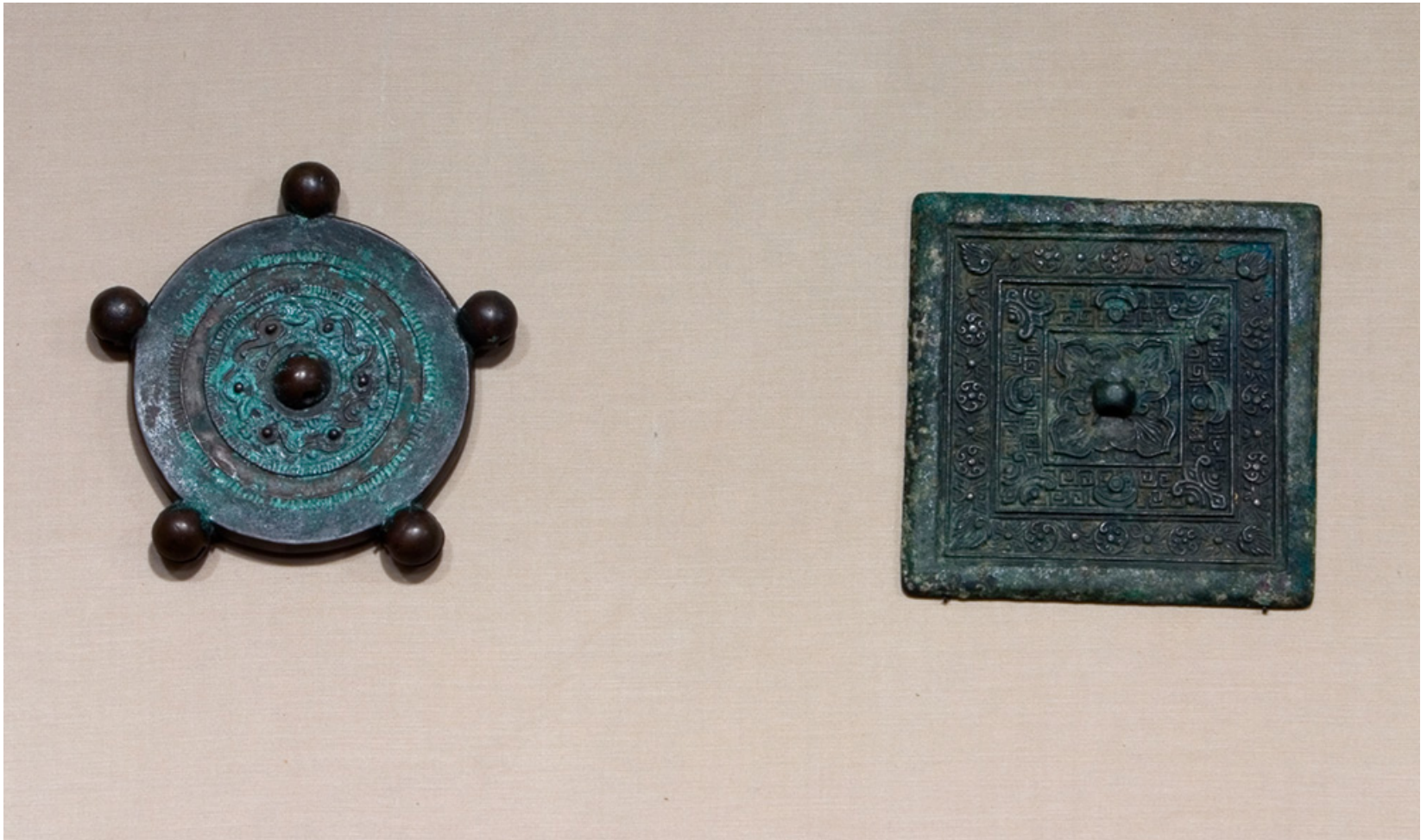
Kofun period, Haniwa cylinder, 4th to 6th century L79.18



Kofun period, Female shaman, 6th
century, earthenware 97.38

Kofun period,
Male head, 6th century,
earthenware 81.117





Circular mirror with spherical bells, 5th century, bronze 76.72.78
Square mirror, 5th-6th century, bronze 76.72.77

